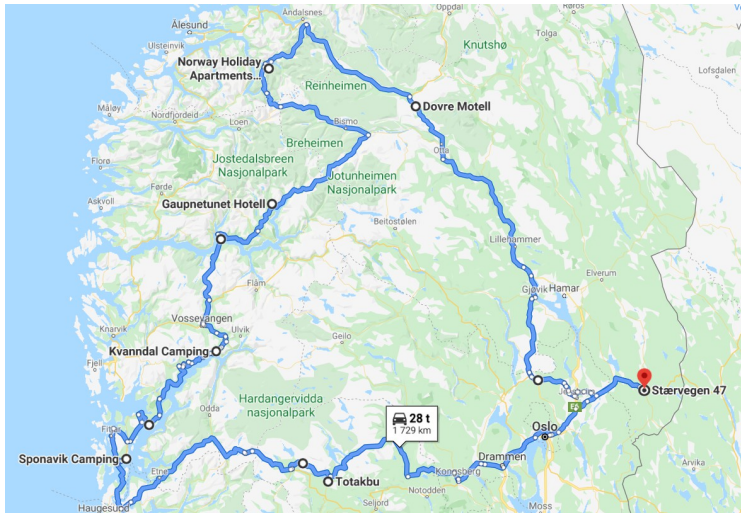


## VESTLANDET 5. - 11. AUGUST 2020



We planned to drive this round. We intended to drive via Hamar, but we read that there are major delays here in connection with road work. Therefore, we drove via [Gran](#) and [Gjøvik](#).



It rained a bit when we started, and it gradually increased, like here.



Then it will be quite dense when we drive past trailers.



The rain gradually subsided. Here we have passed [Lillehammer](#). We look up towards [Rustberg Camping](#).



Right after Rustberg Camping we drove through [Øyertunnelen](#).



After the tunnel, there is a bridge over [Gudbrandsdalslågen](#) by [Tretten](#).



This is at [Mageli Camping](#) which is located at Losna, just before we came to Fåvang. [Losna](#) is an extension in Gudbrandsdalslågen and is considered as a lake.



Just before [Vinstra](#).



Vinstra and [Sødorp](#).



Just past Vinstra.



Just before [Kvam](#).



[Teigkamptunnelen](#) just before Kvam.



Just after the tunnel a bridge crosses Gudbrandsdalslågen.



At [Sjoa](#).



[Sel kirke](#) from 1742.



Just after [Nord-Sel](#) we had a long stop. There were four cars involved in a traffic accident and the queue was long. There was a waiting time of about an hour.



To make the wait go by, many pictures were taken of the nature around us.



A road up to Gammella.





We had booked at [Dovre Motell](#).  
We had to check in at the gas station and get the keys handed out.  
This is the entrance to the cabin area.



The view from inside the cabin and out towards the car.



The day after, on August 6, we drove on.



We refueled at [Dombås](#).



The entrance to the shopping center at Dombås. We had to stock up a little.



Right next to the shopping center the [White House of Candles](#) is located.



Here we can see some of the peaks in [Reinheimen Nasjonalpark](#).



There are big snowdrifts even though it is August. I guess it's Døntinden we see in the distance.



Some pictures from [Bjorli](#). It is popular with tourists all year round.



We see the routes to the many ski slopes on the mountain side. There are 11 slopes and 6 ski lifts.



[Romsdalen](#) runs from [Åndalsnes](#) to [Lesjaskogsvatnet](#). [Rauma](#) flows through the valley.



Here the road goes up to [Sagelva Hydropower Center](#). The center tells how hydropower here has been utilized for over 300 years.



Some waterfalls along the road.



We have driven along [Rauma](#) all the way from [Lesjaskogsvatnet](#). Lesjaskogsvatnet has outlets at both ends. In the west it flows into Rauma and in the east into [Gudbrandsdalslågen](#).

This is at [Marstein](#).



[Trolltindene](#) to the left.

Towards [Romsdalen](#) they form a steep mountain wall, [Trollveggen](#). It is a thousand meters high and is Europe's highest vertical rock wall, and one of Norway's most dramatic rock formations.



This is also at Marstein.



Trollveggen on the left side.



Here we are approaching [Fantebrauta tunnel](#).



A stone wall has been built as protection against rockfall and avalanches.



Here we turn in direction of [Isterdalen](#) and [Trollstigen](#).





The sign shows that we are on the right track.



Isterdalen is quite flat at the bottom with a lot of agriculture.



Further up, the valley narrows.



Here we see the first glimpse of [Stigfossen](#). It has a total drop of 239 meters.



We stopped at a view point and took a picture of the waterfall from there. It is part of the river [Istra](#) which flows down towards Rauma.



The road upwards crosses Istra a bit up the hill. Here we can glimpse the bridge that crosses the waterfall. The road has 11 hairpin turns and each turn has a name, most often after the foreman who was responsible for this part of the road.



On the way up we get a good view of the valley.



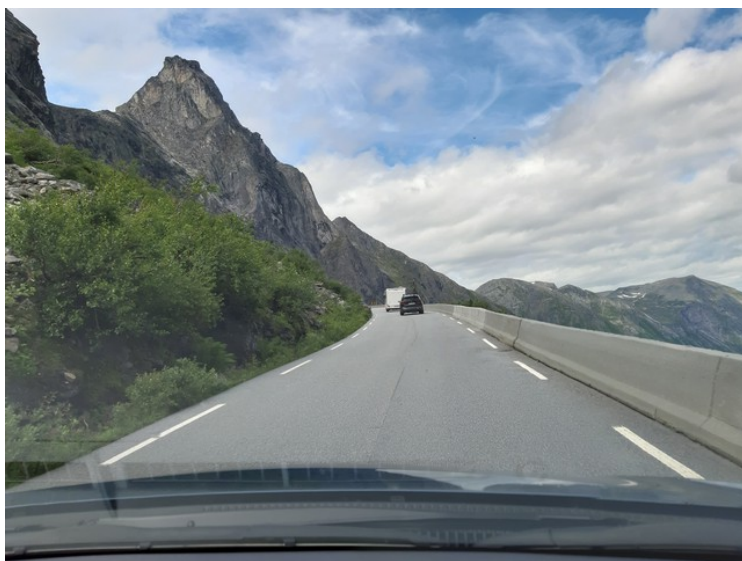
Then it goes further upwards.



Good view to the waterfall.



Powerful mountains.



The last stretch in the steepest part. The road is good, but it is quite narrow, so it was a bit difficult to get past oncoming traffic. We were behind the motorhome shown in the picture, so it was quite comfortable to be behind it.



A visitor center has been built on top of the steepest part. Trollstigen with Ørnevegen is one of [de nasjonale turistveger](#).

[Fjordnorway](#) [Visitnorthwest](#)  
[Nasjonaleturistveger](#) [Visitnorway](#)  
[Wikipedia](#)



There were many cars in the parking lot.



Walkways have been made to a viewing platform.



From the walkway, the visitor center looks like this.



The view further up.



The Ister river is dammed in terraces before it flows out into the waterfall.



The ponds seen towards the visitor center.

Historically, Trollstigen is an old mountain pass between [Valldal](#) in Indre [Sunnmøre](#) and [Åndalsnes](#) at the bottom of Romsdalen. An important reason for the connection over Stega Mountain was a large annual market on the farm [Devold](#) in Romsdalen. But it was only after the road opened in 1936 that Trollstigen became a tourist magnet.



The river before it flows out into the waterfall.



Here it flows over the edge.



The viewing platform is popular.  
The waterfall we see in the background is called [Trollfossen](#). It has a higher drop than [Stigfossen](#), but less water flow, so it is not as impressive as Stigfossen.



The view down towards Isterdalen.



Here we see most of the steepest part of the road.



Here are some who have had fun laying stones on each other.



Til slutt et par bilder av oss på plattformen før vi kjører videre.



Then we are on our way to the highest point on the road.



Here it goes down again, towards Valldal.



The valley here is called Slettvikane.



Alnestinden.



The birches are small so high up.



Here we have come to Meiadal, and we look up towards Meiadalskoppen.



[Valldøla](#) flows in the valley bottom.



Soon down by populated areas.



This is [Gudbrandsjuvet Camping](#).  
It's on [Alstadsæter](#).



Valldøla has cut a gorge and forms a couple of waterfalls.  
Here there is more water in the river than up on the mountain.

Links:

[Visitnorway](#) [Fjordnorway](#) [Visitalesund](#) [Nasjonaleturistveger](#) [Wikipedia](#)



The upper waterfall.



The lower waterfall.



View platform.



View up the valley. The cafe on the right.



[Gudbrandsjuvet Cafe](#) was closed when we were there due to the corona situation.



These trees were at the lookout platform. Here we see the roots of the trees quite well.



The next stop was at Linge ferry quay. There we will take the ferry across [Norddalsfjorden](#) to [Eidsdal](#).

The [ferries](#) goes quite often across the fjord.



We had booked accommodation in [Norddal](#). The hotel is called [Norway Holyday Apartments - Norddalstunet](#). In this corona time, it was self-service here. We had received the room number and code for the key box by email.

The hotel is located right next to Storelva.





The apartments are in a row.



View towards Norddalen.



View over Norddalsfjorden.



Down by the fjord there was a [grindstone](#). Next to the grindstone was a poem, [Slipesteinen](#), by [Jakob Sande](#).



Boathouses by the fjord.



[Norddal Church](#).