

## DRIVING IN SWEDEN 31 MAY – 2 JUNE

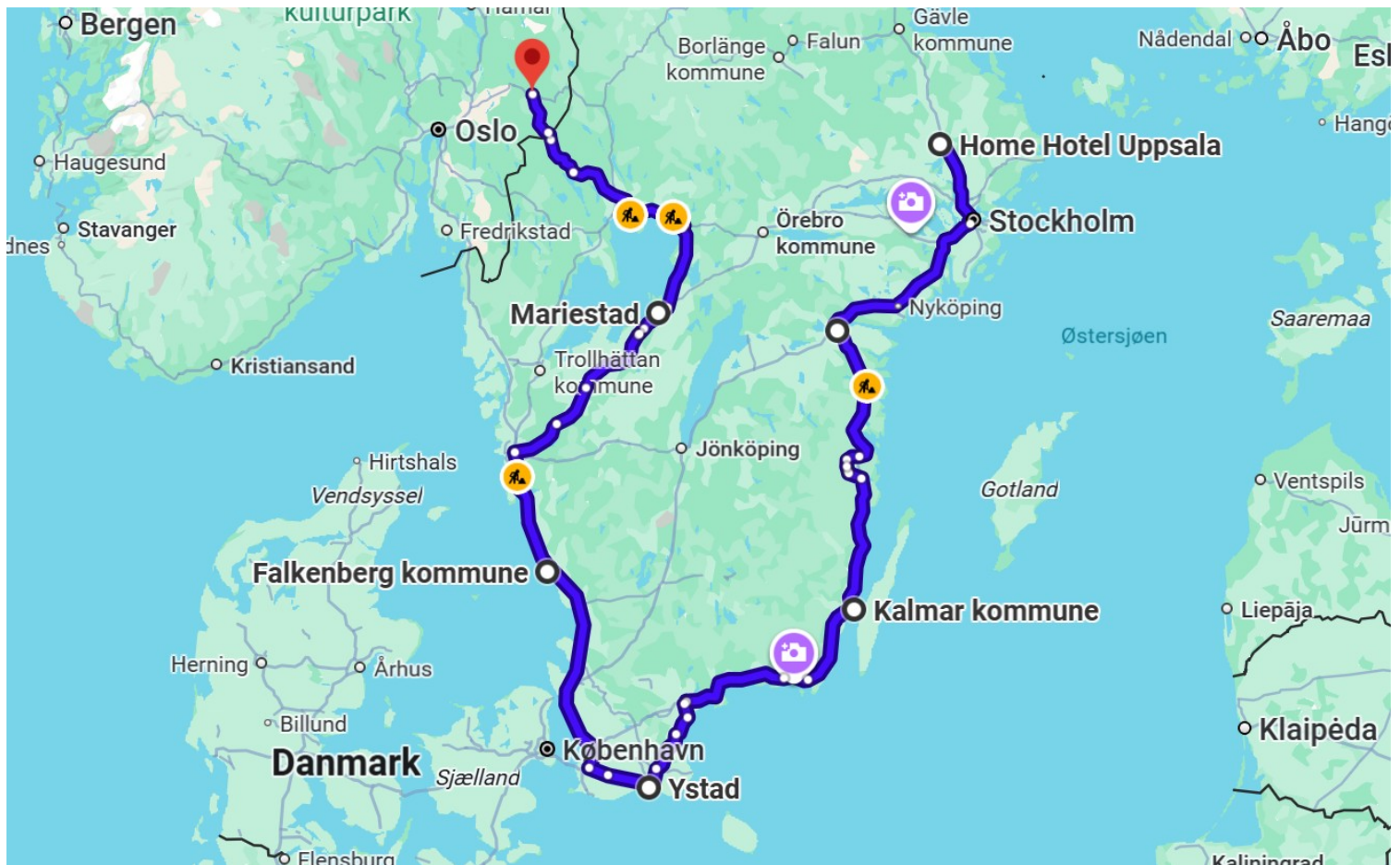
We had planned a 7-day trip in Southern Sweden, and we had booked a hotel for the whole round. But after 2 days we found out that we were so bad at walking to see sights, that the trip would in practice be driving from hotel to hotel.

We didn't think there was any point in that, so we canceled the rest of the hotels and traveled back home.

[LINK](#) to the first days of the trip.

What is described further here is what we had planned to see. Pictures found online.

This part of the trip was planned from June 2 to June 7.



The plan was to drive like this.



We were going to stay at the Elite Grand Hotel, Norrköping.



We had booked a superior double room.

Norrköping is mentioned as a city as early as the 13th century. It flourished in the 17th century as Sweden's first industrial site and export port for the iron works; for a time it was the country's second largest city. In the 19th century, the city experienced new industrial growth.

Interesting industrial buildings from the 19th century are located along Motala ström. The old industrial buildings have later been used for other purposes, including the Museum of Work.

The population is just under 100,000.



The museum of work

The Ironing board is a protected industrial building in Norrköping that has been converted from a factory support building into a modern commercial and cultural center.



The historic industrial area is called Industrilandskapet. This is a unique and preserved quarter with old textile and paper factories from the 19th and 20th centuries, centrally located by Motala ström. The area is often referred to as 'Sweden's Manchester' due to its rich industrial past

Motala stream, colloquially called 'Strömmen', is the waterway that runs straight through central Norrköping. It connects Lake Glan in the west with Bråviken/Baltic Sea in the east.

Visualization Center C is a popular science center and research arena. It acts as a bridge between academia, business and the general public, and combines research in data visualization with interactive exhibitions and experiences.



This building is very likely the Chamber of Commerce in the Industrial Landscape.

The building belongs to the Östsvenska Handelskammaren (East Swedish Chamber of Commerce) and is located in the old industrial area.



The next city was Kalmar. Here we should have stayed at Scandic Kalmar West.



We had booked a standard room.



Once upon a time, Kalmar Castle was called 'The Key of the Kingdom', thanks to its strategic location on the Kalmar Sound and the border with Denmark at the time. Over the centuries, Swedish kings have rebuilt and built on the castle, which today is the best-preserved Renaissance castle in the Nordics.



Ölandsbroen is the longest car bridge in Sweden, 6,072 meters long, clear height is 36 meters. The bridge is built in reinforced concrete in 155 spans, the highest part has 6 spans with a span of 130 metres. It connects Öland with the mainland at Kalmar. It was opened in 1972, and for several years was Europe's longest bridge.



Kalmar Cathedral is one of Sweden's most famous baroque cathedrals. It is located on Stortorget in the middle of Kalmar and was designed by the famous architect Nicodemus Tessin the Elder in the 17th century. Construction started in 1660 and continued into the 18th century when Kalmar was moved to today's center from the area by Kalmar Castle.

The church is considered one of the best examples of Baroque architecture in Sweden.



The old water tower in Kalmar is 65 meters high and can be seen from a long distance. The building is the tallest on Kvarnholmen in Kalmar and today contains apartments.



The Vasabrunnen (also known as the Vasa Monument or the David and Goliath Fountain) is a famous sculpture and fountain on Larmtorget in Kalmar. It was created by the sculptor Nils Sjögren and unveiled on 12 June 1926 during the fifth Swedish Culture Fair.

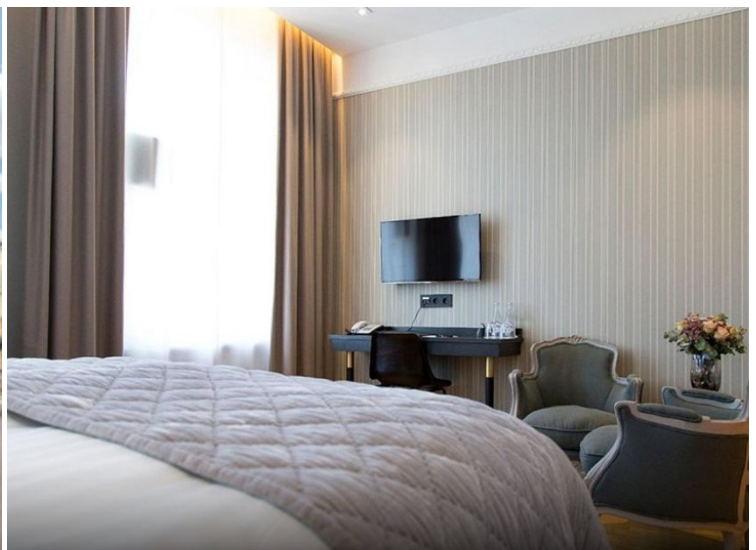
The monument honors King Gustav Vasa and consists of two bronze statues depicting the story of David and Goliath.

Kalmar is an old trading place that particularly flourished during the Hanseatic League (from the 13th century) with large trade (iron and fish) and shipping. The city was also strategically important and in 1397 the Kalmar Union was adopted at Kalmar Castle. The union united all of Scandinavia under one queen.

The population of Kalmar is now approximately 40,000.



The next stop was in Ystad. Here we should have stayed at the Continental du Sud.



The room we were supposed to stay in.

Ystad is a trade center for south-eastern Scania with workshops and the food industry. The city is also a road and rail hub with ferry connections to Rønne on Bornholm and Świnoujście in Poland. Ystad is a tourist and bathing resort and one of the best preserved medieval towns in Sweden with many old half-timbered houses. The population is approximately 20,000.



In the middle of the center of Ystad is St. Mary's Church. The church from the 13th century is Ystad's oldest and one of Scania's oldest brick churches. In the tower of St. Mary's Church, we find the tower guard, also called the herald. He has watched over the city since 1748. The bronze relief above the church gate of St Mary's Church shows the Virgin Mary and the baby Jesus.



The monastery in Ystad is one of the best preserved medieval monasteries in Sweden. It was founded in 1267 as a Franciscan monastery ('gray friars monastery').



The next stop was to be in Falkenberg and the Ocean Hotel.



There we were supposed to have a deluxe double room with a balcony and sea view.

Falkenberg is located at the mouth of the river Ätran in the Kattegat. It has approximately 20,000 inhabitants and is a popular tourist destination.

Falkenberg's history as a trading post began at the end of the 13th century, but the town received its official city privileges in 1558. Before this, the trading post Ätraby grew up by the river Ätran under Danish rule, and the name

Falkenberg was originally linked to the fortress Falkenbergshus which was built at the end of the 13th century. The fortress was burned and destroyed during the Engelbrekt Rebellion in 1434. The castle was never rebuilt, and the ruins remained.



Gamla stan is a district in Falkenberg. It is the oldest part of Falkenberg. It grew up around the Saint Laurentii church. Cultural deposits from the beginning of the 14th century have been found in the district. The street network is from the Middle Ages and many of the buildings are from the 18th and 19th centuries. The district is characterized by low, well-preserved wooden houses in traditional colours, surrounded by cozy gardens with old fruit trees. The narrow, winding streets are paved with classic cobblestones

Falkenberg's home village museum has been located in the district since 1937.



This is the Toll Bridge.

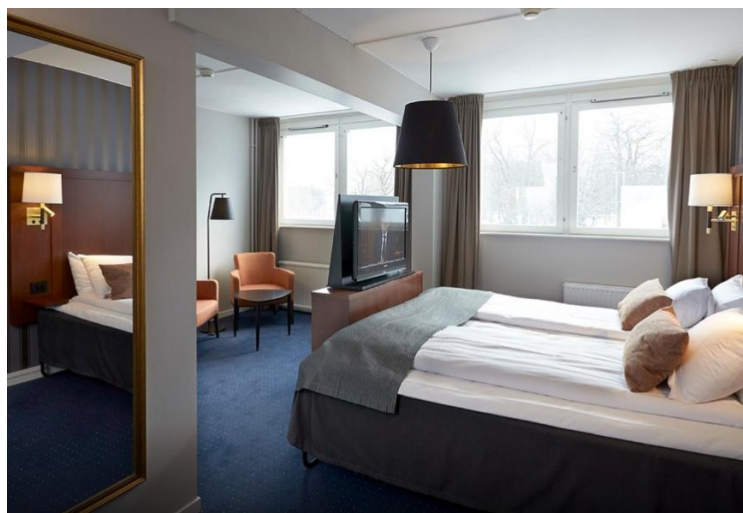
Construction of the toll bridge began in 1756 and was completed five years later. Previously, there had only been a simple wooden bridge at Garvareforsen. It was often destroyed by ice and spring floods and was in a very poor condition in the middle of the 18th century. Until 1914, you had to pay a toll to cross the bridge, hence the name Tullbron. In the 1940s there were plans to widen the bridge to cope with the increasing traffic. However, that was not the case, and the Toll Bridge has been declared a building monument since 1984.



Falkenberg church is located in the middle of the town. The church was inaugurated in 1892 and is built in neo-gothic style.



The next stop would be at Vänerport Stadshotell in Mariestad.



We had booked a double room.

Mariestad was founded in 1583 by Duke Karl, who later became Karl IX of Sweden. It is named after his wife Maria of the Palatinate. It was a bishop's seat until 1646.

The city has approximately 16,000 inhabitants. It is located where the river Tidans flows into Vänern.



Gamla Stan is the area on Näset, around the mighty cathedral. Gamla Stan in Mariestad is considered one of the country's best-preserved wood villages. The buildings are mostly from the 18th and 19th centuries and, together with houses from other eras, give an insight into the old way of life.



Vänerskutan is a monument/fountain made of sheet copper and Vånga granite on Nya torget in Mariestad. It was made by Per-Erik Willö in 1966. This is one of Mariestad's most famous monuments. It is this square where most of the city's festivities take place, with the Monument as a starting point