

NORWAY 6 - 15 JULY

This time the route went from Gran via Solør, Sørlandet, Sandnes, Ryfylke, Hardanger and back to Gran via Hardangervidda and Hallingdal.



First part of the route.



Nice view from Lygna towards Einavatnet.



Einavatnet.



In Gjøvik the road goes past the Skibladner house.



Mjøsa.



Mjøsbrua (The Mjøsa bridge).



We had a break at Prøysenhuset.
Here we go along Præstvægen towards Prøysenstua.



Here flowers the rose-bay willow.



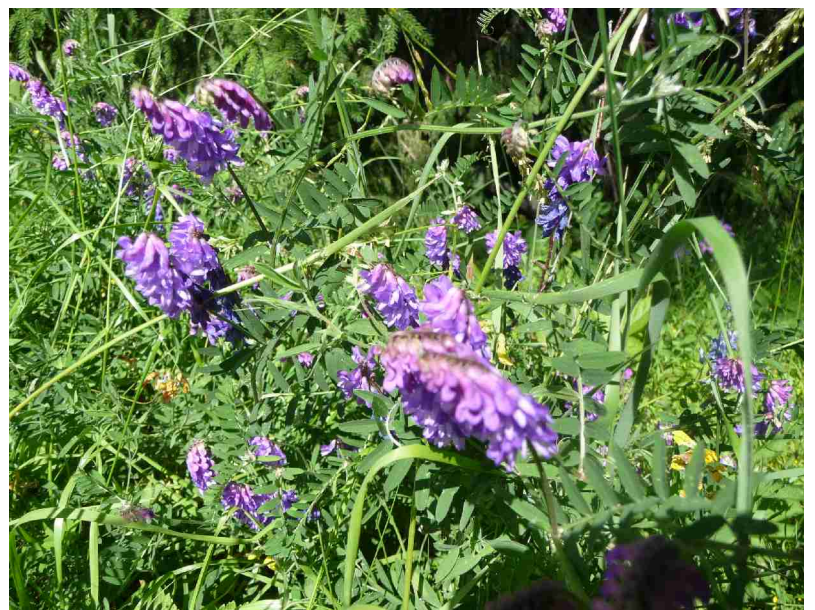
Here is a crossroad. We came from here.



We are going there.



Going past.



Fuglevikke.



This is Prøysenstua (Prøysen's cottage).
Alf Prøysen (23 July 1914 - 23 November 1970), was a writer and musician from Norway



Outside the house lies this memorial stone.



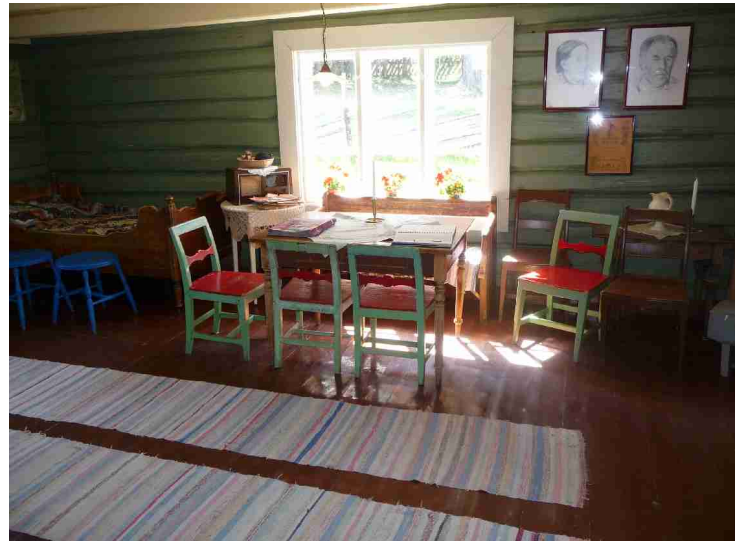
There is also a couple of outhouses on the farm.



This is the name of the road.



The grindstone that gave name to Slipsteinsvalsen (The grindstone waltz).



Inside in the living room.



Anne Berit is sitting on «the bench by the window»



The bed and the spinning wheel.



The kitchen.



Outside again.



Sketches that are made by Prøysen.



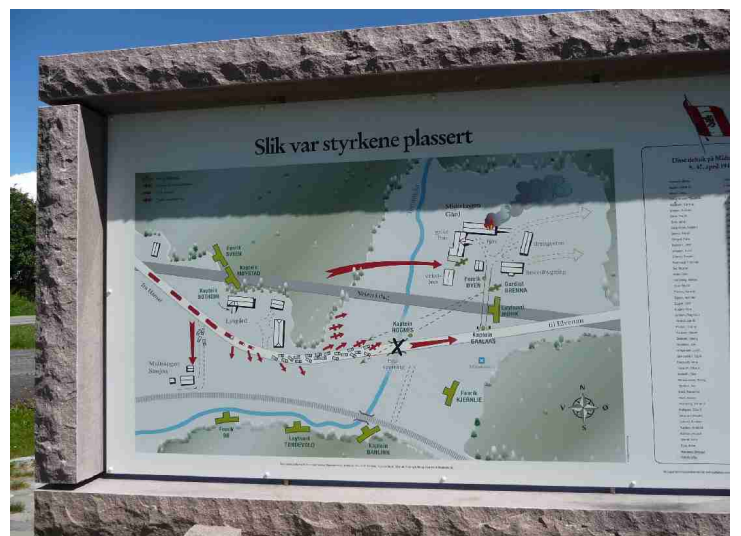
This is how Præstvægen (The vicar road) looked like before.



A couple of pictures of the houses.



Next stop was at Midtskogen, just before Elverum.



Norwegian troops stopped the Germans here 9.-10. April 1940.



Sketches from the combat actions.



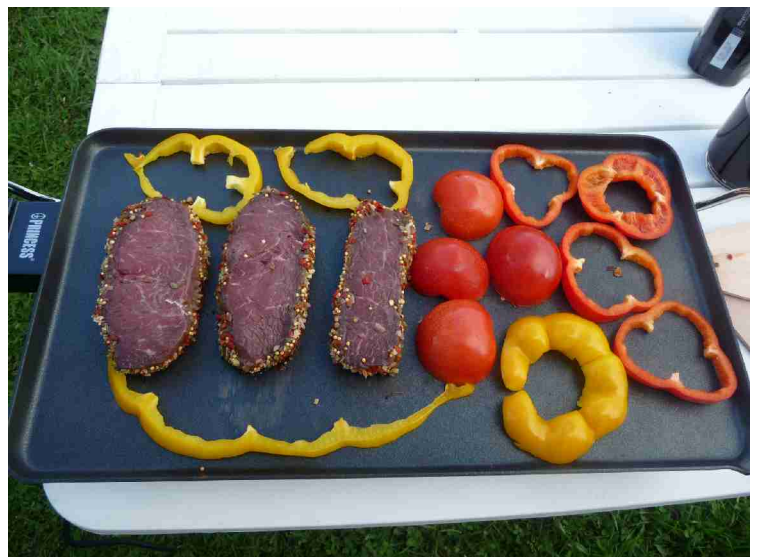
Information poster.



Memorial stone



Here we are at Færder Camping in Flisa. We had been at a shop in Flisa and bought this grill plate.

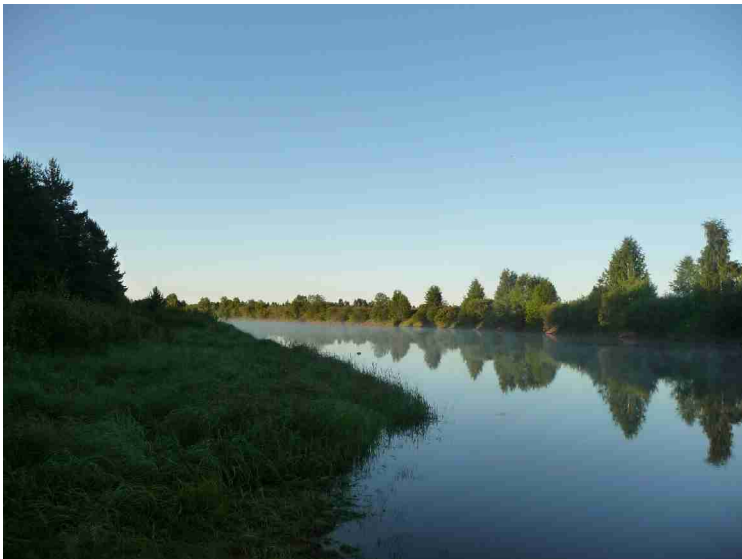


The steak and the vegetables are ready for grilling. Had a good self composed salad beside.

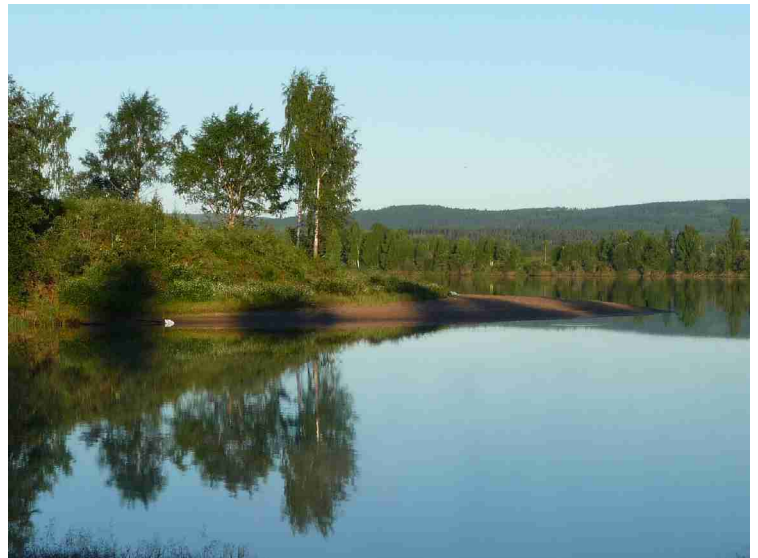


Glomma.

5 o'clock in the morning Kjell was out, taking pictures of the ground and the surroundings.



Flisa river.



Glomma.

Here Flisa river is flowing out into Glomma.

There was so much mosquitoes at Flisa didn't stand more than one night. We continued to Skaslien at Kirkenær.



While there we visited uncles and aunts of Anne Berit in Namnå



Second part of the route.



At Kjærstrand Camping we tested marquee for the first time. It functioned as it should.



The neighbor had to nice Bengal cats.



The beach.



A picture from the ground.



The route further on. We stopped on the way in Grimstad to fix something wrong with the heater. It was only a fuse that was gone, so it was fixed in an hour.



We spent the night at Svindland Camping outside Feda.



Pictures from the camping ground



The sparrow is eating a bread heal



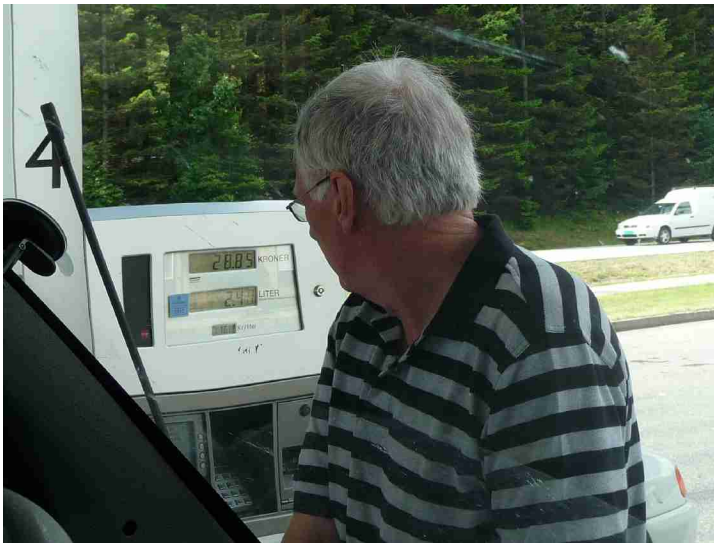
The route further on.



We stopped at Vikeså to fill diesel.



Kjell gets the pump ready.



Does the diesel come soon?



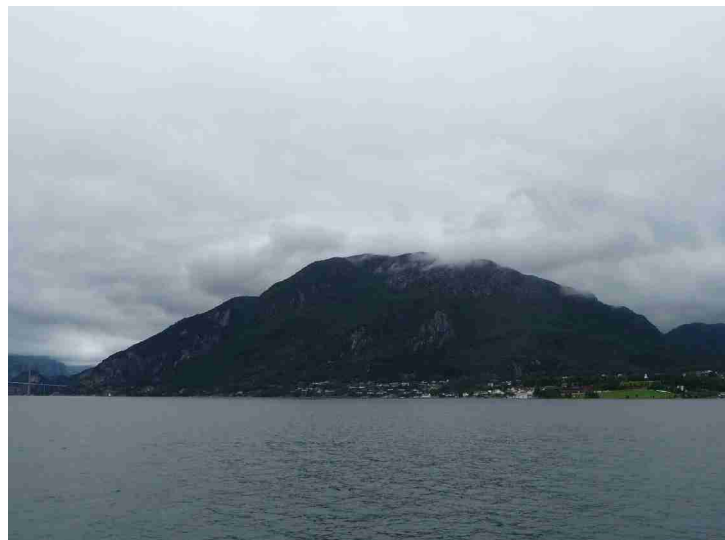
It's OK bra!



We were at a shrimp and lobster party at Tor og Inger Torgrimsen.



Visited also Kjell's relatives

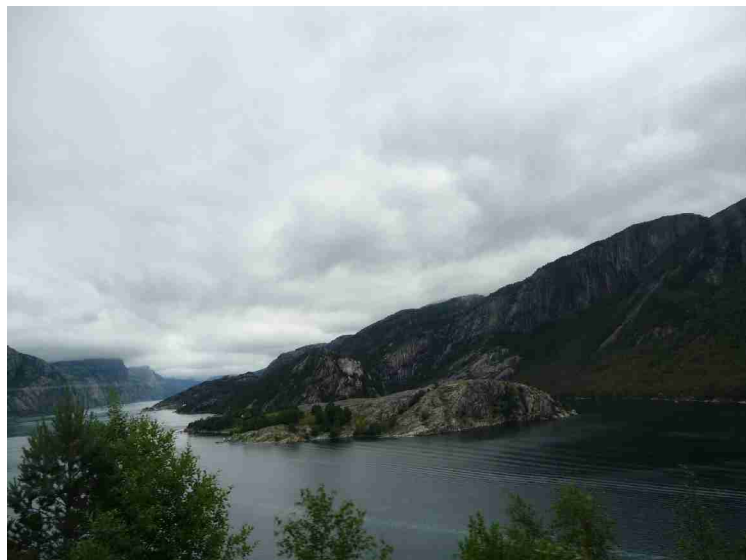


The route further on.

A view from the ferry towards Forsand where Kjell is born and grown up.



View towards the Lysefjord and the Lysefjord bridge.



The Lysefjord with Bergsholmen.



This is Little Bergsholme



View further into the Lysefjord



Bjørheimskjeften, which is shaped by Holttaheia to the left and Reinanuten to the right in the picture on each side of Tysdalsvatnet.

These have been used as a landmark and sailing mark.



Årdal in Ryfylke.



Foxglove along the road.



Erfjord bridge.



Think this is «Anna af Sand», one of Europe's oldest floating vessels. She was launched in Hardanger in 1848.



Upper part of Sandsfossen, which is in Suldalslågen. It is the river with the largest water flow in Rogaland county.



Sandsfossen. Suldalslågen flows from Suldalsvatnet (68 m above sea level) to Sandsfjorden and is only 22 km long.



Below the waterfall. There is built a salmon studio here with two windows directly into the waterfall such that it is possible to see the salmon go upstream to spawn.



Suldalslågen



At Sand Camping.



The route from Sand to Ål.



Suldalsporten (gate), which is a narrowing in Suldalsvatnet (lake).



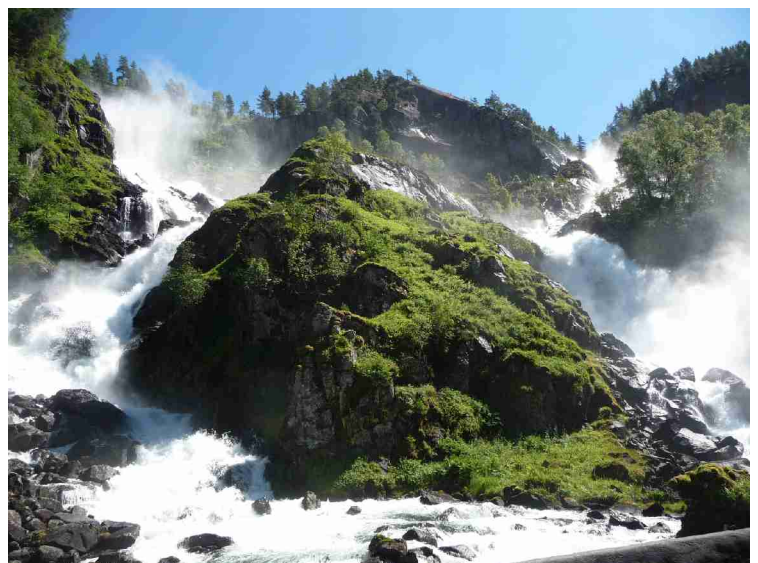
Røldalsvatnet with Røldal innermost. Røldal is the place in Rogaland that has the longest skiing season.



View over Røldalsvatnet in direction of Sand.



Here we can see the southern part of Folgefonna at a distance.
Folgefonna is Norway's third largest glacier.



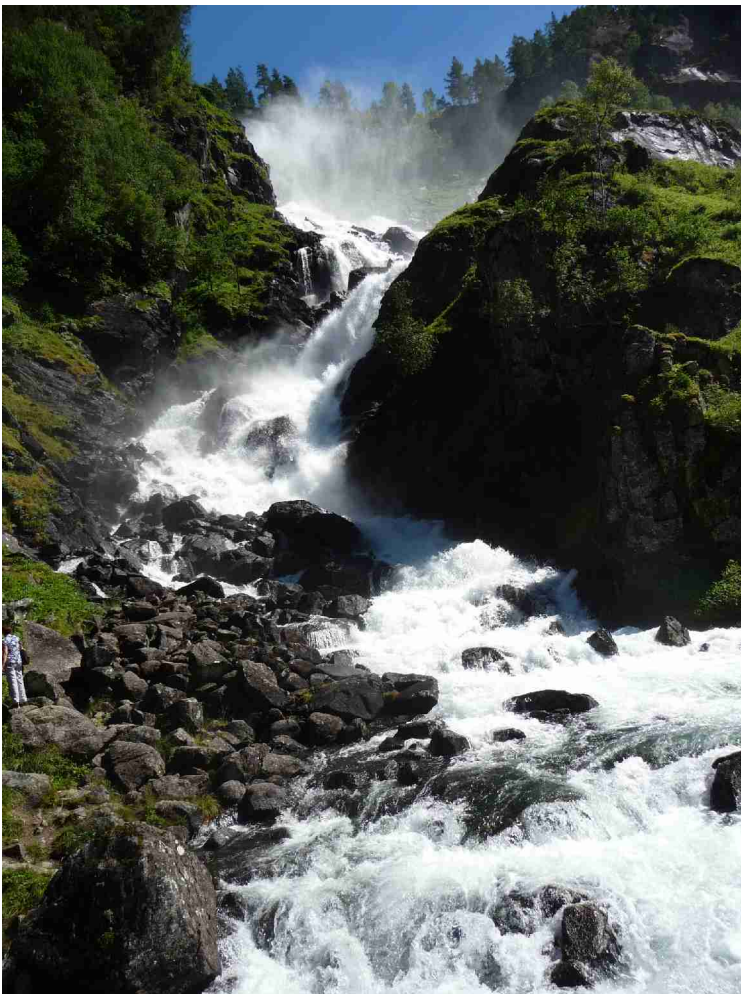
This is Låtefossen, just before arriving at Odda.



The waterfall is 165m high.
It is one of the most visited nature based attractions in Norway.



Before arriving at Vøringsfossen we did some food shopping in Lofthus in Ullensvang municipality.



One of the courses of Låtefossen.



Vøringsfossen has a perpendicular downfall of 145m and a total of 182m. It was the most visited nature attraction in Norway in 2006



This is Fosslí Hotel, which lies right above Vøringsfoss.



Now we are up on Hardangervidda (Hardanger mountain plateau).



Here Anne Berit is going to buy genuine goats cheese.



Now he has sold one more cheese.



A view in direction of Hardangerjøkulen, which is the sixth largest glacier in Norway.



Halnefjorden upon Hardangervidda.

