



The 26<sup>th</sup> of March we drove up into the mountains west of [Kyrenia](#). They are located in the mountain range that runs along the entire north coast and is called [Kyrenia Mountains](#).



Up here is a castle, [St. Hilarion Castle](#). We can just make out the walls of these images. Another link to [St.Hilarion Castle](#).



View down to Kyrenia.



This is the parking lot at the entrance. There was also some buses there when we arrived.



A souvenir shop.



Here we see some of the lower walls.



More walls.



The entrance.



View down to Kyrenia.



This area is the Barbican.



More views.



The defenses are built on several floors.



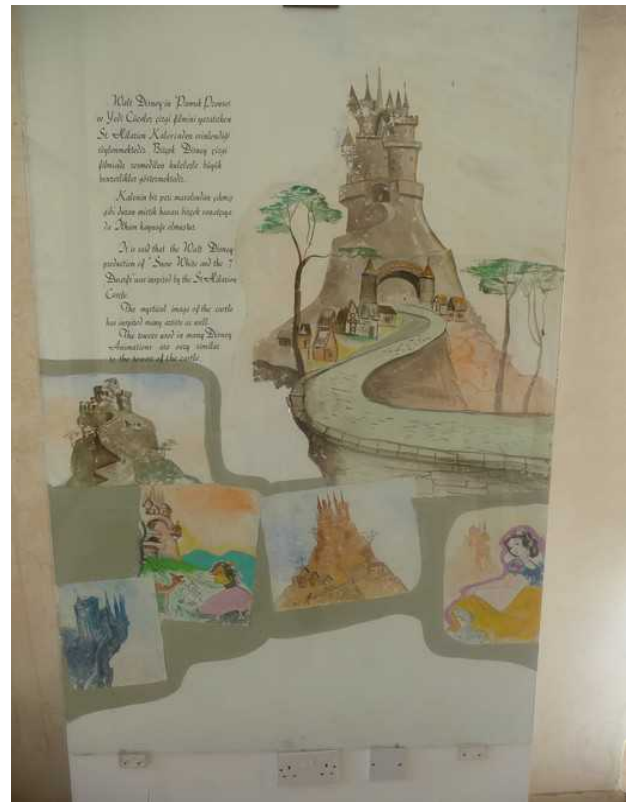
Here we look up towards the top.



We see a long wall on the hill.



Here we come to the stables.



It is said that Walt Disney's production of Snow White and the seven dwarfs was inspired by St Hilarion Castle



The gate house with St. Hilarion chapel at the back.



The gate and the stairs up to the chapel.



More views.



The long wall.



Views.



Look out tower.



View down along the wall and down to the parking lot.



Anne Berit in the look out tower.



View up to Prince John's Tower.



Here has once been a kitchen.



It is quite steep stairs.



View from Prince John's Tower.



From here I can see all the way to Turkey.



More views.



At the top.



This sign tells us that we are 732 meters above sea level.



View. We see the top of Prince John's Tower on the left.



Now it's a long way down to the parking lot.



On the way to the royal apartments.



Inside. The roof is gone.



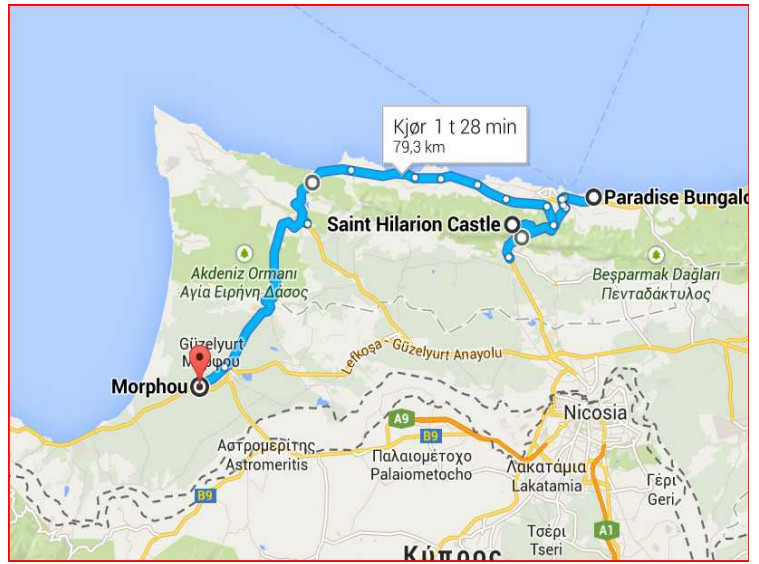
When we came down from St Hilarion Castle, we drove west. We drove to [Morphou](#) before we turned around and drove back the same way. Back in [Kyrenia](#) we ate a light lunch at a rooftop cafe next to [Kyrenia Castle](#). Kyrenia Castle in the background.



[The Kyrenia marina.](#)



I have eaten my food. There came some dark clouds and cold air as we sat there, so we were not too long.



This was our driving route that day.



The next day, the 27<sup>th</sup> of March, we decided to drive out to the tip of the [Karpas Peninsula](#). We drove like this. [Link to description of Karpas.](#)



The first stop was at [Kantara Castle](#). Here we get the first look of it.



More links to descriptions of Kantara Castle.  
[Link 1](#) [Link 2](#) [Link 3](#) [Link 4](#)  
[Plan of the castle.](#)



There are good views from here as well, although this fortress is located only 630 meters above sea level.





View eastwards.



The flowers grow in rock crevices.



Here the same variety grow in the slope.



There is a way to go up, but we're getting close. The Byzantine tower is closest. The southeast tower behind it. On the far left we see the barracks.



At the top we see the South-east Tower and the Byzantine tower.



We can see the cistern to the right.



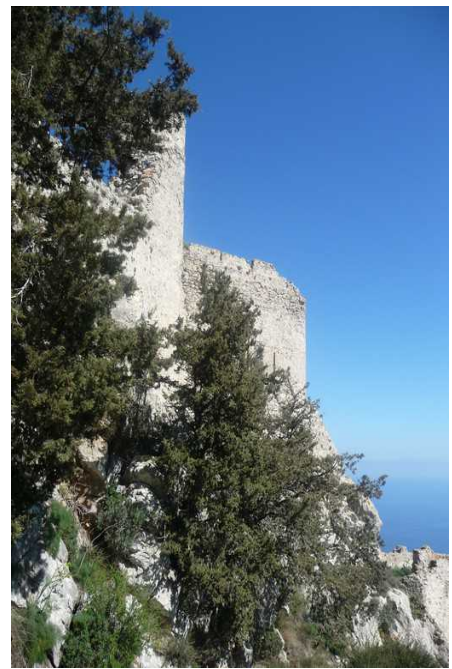
Almost there. The southeast tower is highest. The Byzantine tower to the left.



More flowers.



At the top we see the horseshoe-shaped tower and below it a Byzantine tower.



The horseshoe-shaped tower and at the top the two-storey tower.



The towers at the barbican.



The remains of the two-story tower.



View to Turkey. We vaguely see Turkey in the horizon.



View westwards.



View southwest.

The remains of the upper tower.



Here we come far west. The closest is cisterns, rear left is a vaulted chamber.



View west.



The vaulted chambers.



Here we look east towards the Karpas Peninsula over the roof of the barracks.



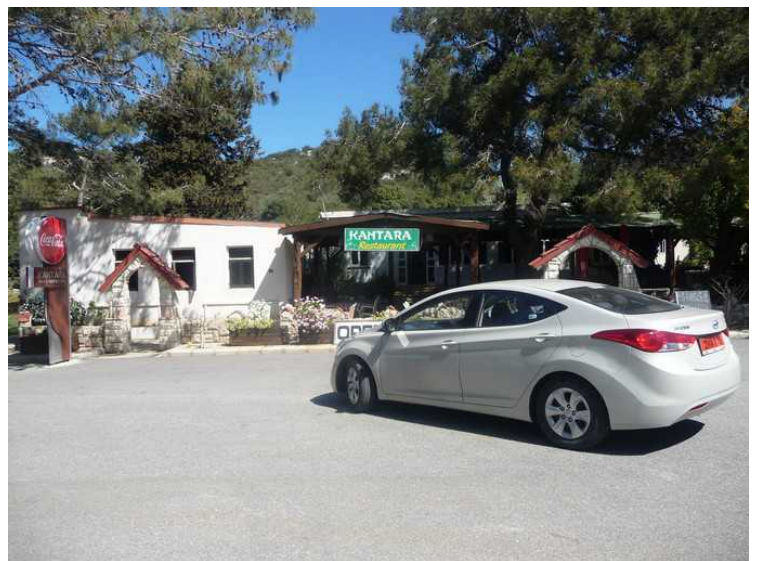
The upper tower.



View of the plains below.



This is the path that runs from the western part to the eastern part of the fortress.



Here we are down again at the ticket office and the car we rented.



Further east we drive past a small town called Yedikonuk.



Some of the buildings.



The church and the mosque are located right next to each other.



Fertile plains.



These mountains are not so high.



Here we have come almost to the end of the peninsula and can see the outer cape.



We see the ultimate rock crag with islands beyond.



It grows in the sand where we stand and take pictures.



Nice flowers.



This is the beach.



Now we come all the way to the tip of the cape. We discussed if we should drive to the tip, because the road was quite bad the last bit. But it went well.



This is north of the cape.



This is also north of the cape.



Far out there is an observation post.



There is a small islet just off the cape and the little island we look further out is called Klidhes.





The rock seen from the cape.



On the way back we made a stop at the Apostle Andres monastery. We are met by a crowd of donkeys.



They are used to getting food from tourists to come, but we had no food. I try to explain it for this donkey.



Then it was so sad.



[Apostolos Andreas Monastery.](#)  
[Link 2](#)



There were several buildings here and all badly needed maintenance. We read on Internet that there is allocated money for this, so it will probably be better.





One of the main buildings. There is a church here, but we did not get any pictures inside of it, for it was not allowed to use flash.



View of the cape.



There was a market on the left side here, but we did not take a picture.



Back at the hotel. There were many pigeons in the area. This one sits in a tree right outside the balcony.