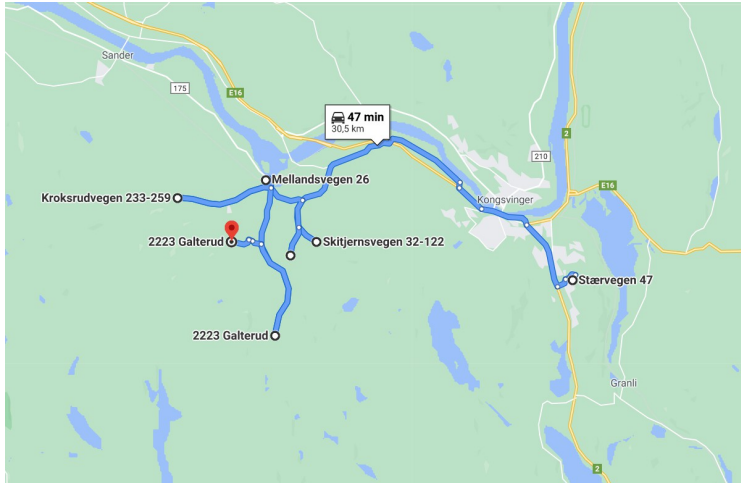


GALTERUD THE 14TH OF SEPTEMBER 2020



This day we drove a bit back and forth in Galterud to get to know this area better.



We drove on the south side of Glomma and saw that there is construction activity in the center of Kongsvinger.



We turned here, above Ramstad. There is a barrier here, but they worked in the forest a little further up, so the barrier was open.



There is forest in all directions here.



Most of the farmers have harvested the grain now.



We drove back a bit and took over Kvernstuen to Ånerudvegen. Then we drove down again. A stream flows through the valley. Here it is dammed.



This is the dam.

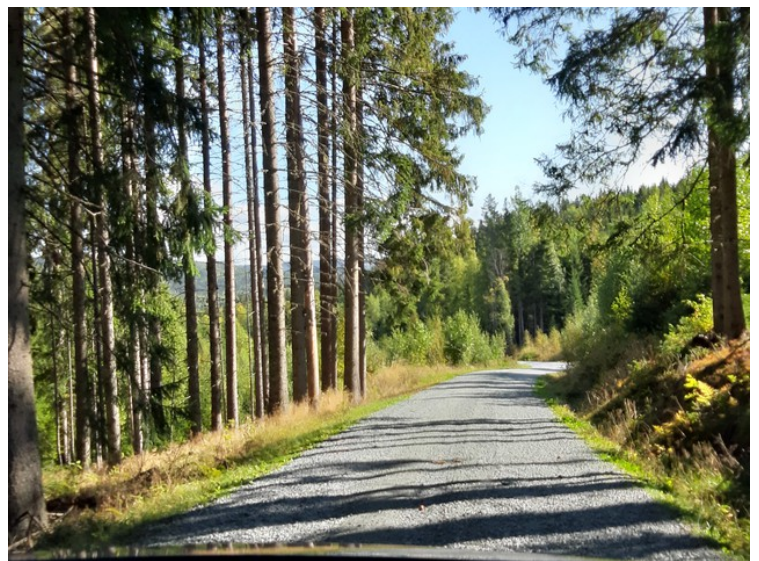


The water flow was not very impressive right then.

Then we drove up Heibergvegen and Høgdavegen. Here we stopped.



We took a picture of the view.



Then we drove down again.



Nice flowers.



When we came down to Heibergvegen we drove further up. Some horses were grassing here.



We drove up Heibergvegen until we were stopped by this barrier. Then we were up at 350 meters above sea level.



Here it went downwards again.



Some pictures of the view.



We drove by [Galterud Station](#) before going home.