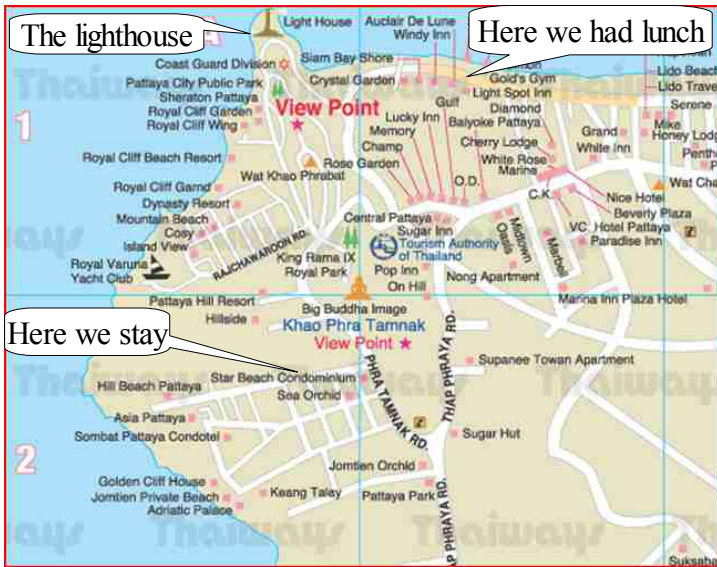


# THAILAND, PATTAYA / JOMTIEN FROM AUTUMN 2010 UNTIL SPRING 2011

One day we walked to a lighthouse, which is positioned on the headland dividing Pattaya from Jomtien.



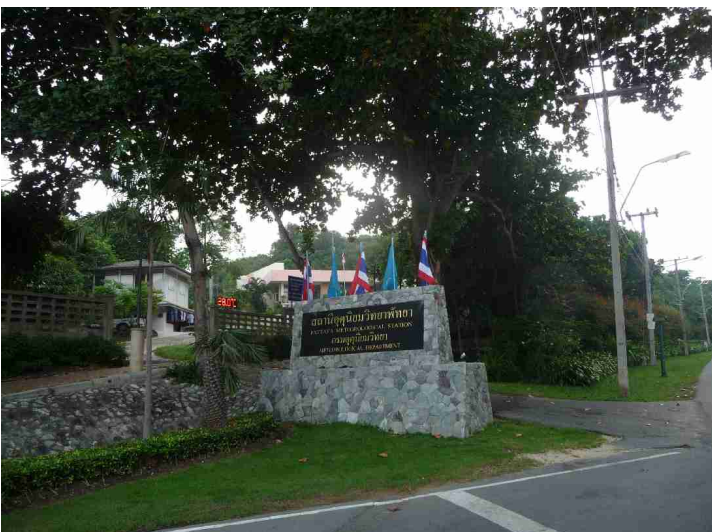
Walking along the road.



There were nice plantings along the road.



This is at Pattaya meteorological station.



Still at Pattaya meteorological station.



This is a big congress center.





There are a couple of big hotels out here. This is Royal Cliff Garden.



The entrance.



They have their own lighthouse at the entrance.



This is the real lighthouse on the promontory.



Fishing is popular out here.



Here is the lighthouse again. There is a restaurant right to the left.





The restaurant seen from the lighthouse.



Now we had walked so far that we had earned a beer.  
Kjell is ordering.



We sat down here.



Kjell is looking at the boat traffic on the sea outside.

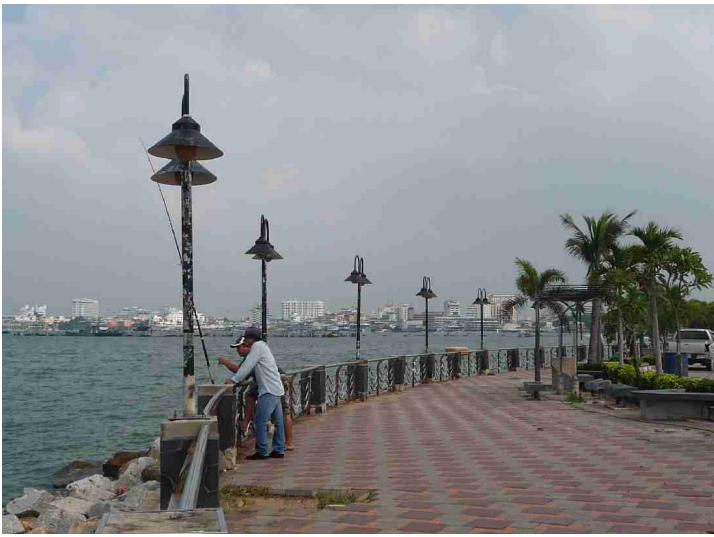


Here a fishing boat is passing by.



There were many playing with water scooters.





We found out that we wanted to eat something in Pattaya, so we continued along the beach promenade to the center of the town.



View across the bay to north of Pattaya.



Here is another guy trying his fishing luck. He is throwing a fishing net.



View across the bay to the center of Pattaya.

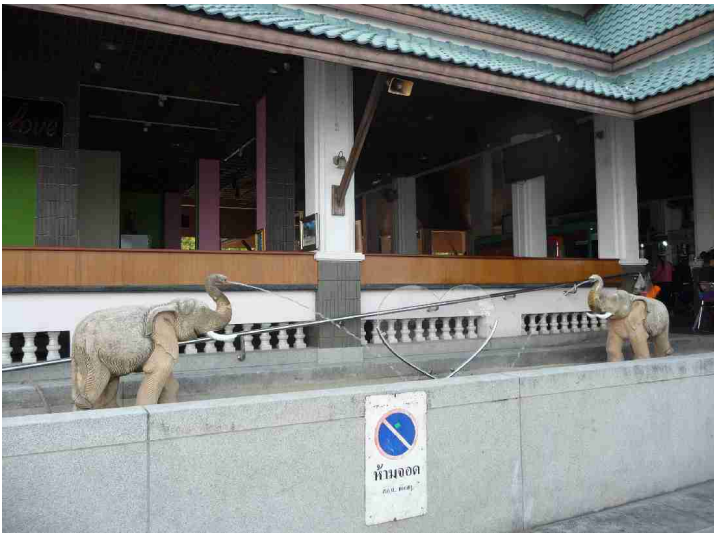


Pattaya City written with big letters in the hillside.



Inmost in the bay were some small boat laying at the beach.





A couple of elephant fountains.



A nice staple tower.



The entrance to the «Walking street». It was not a pedestrian area when we arrive because the cars were driving in both directions in full speed.



A vegetable store with a lot of knick-knack.



We went in to this restaurant.

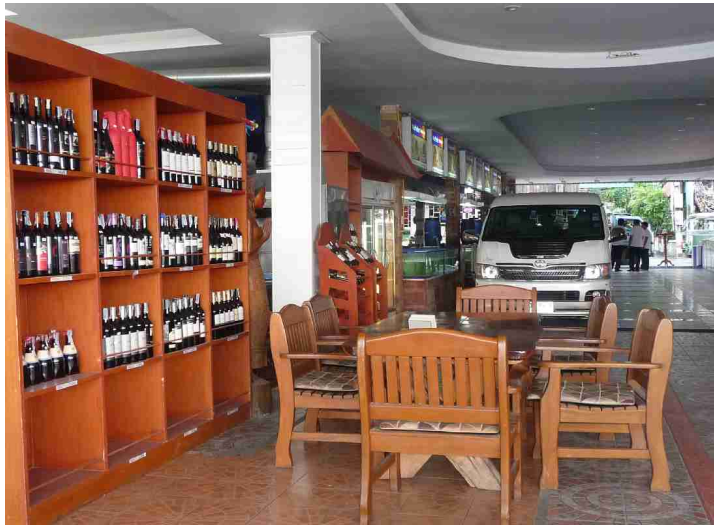




Here we have sat down at a restaurant and have got the food. Anne Berit ordered cooked fish.



Kjell ordered crab. Both were delicious.



We entered the restaurant through this opening. It had specialized on seafood and there were a lot of fish tanks in the opening.



This guy was standing peeing all the time.



This was the view from the restaurant.

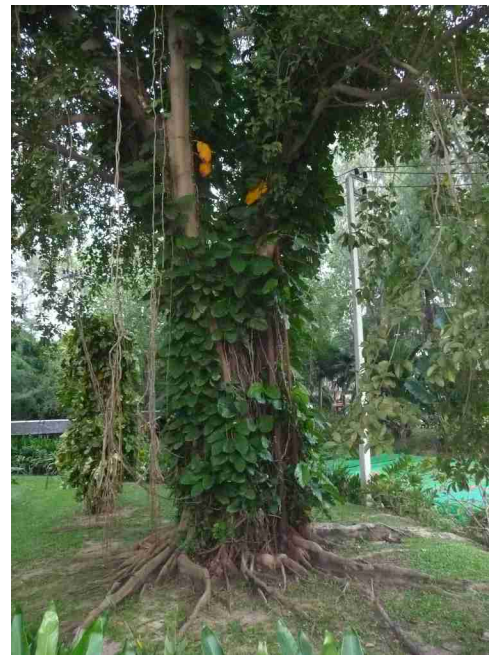


This is the street outside.





A big tree outside a hotel.



Big roots on the ground.

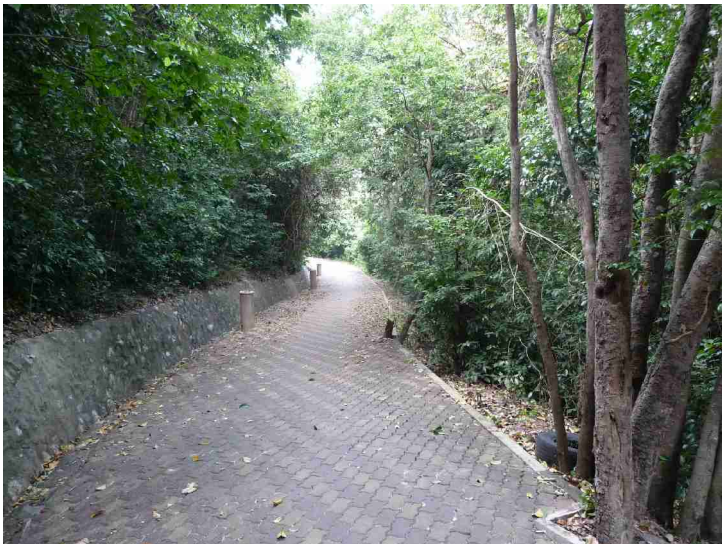


Nice fountain.



Another special tree.

After this it started to get dark, so we decided to take a taxi back to the hotel.



We went to the lighthouse many times and we found another road that went from the Queen Sirikit Park.



This is at the highest point at the meteorological station.





Here are a lot of statues of mythical animals.



A peace monument.



Rather special rubbish bins.



There were also special benches of green stone.

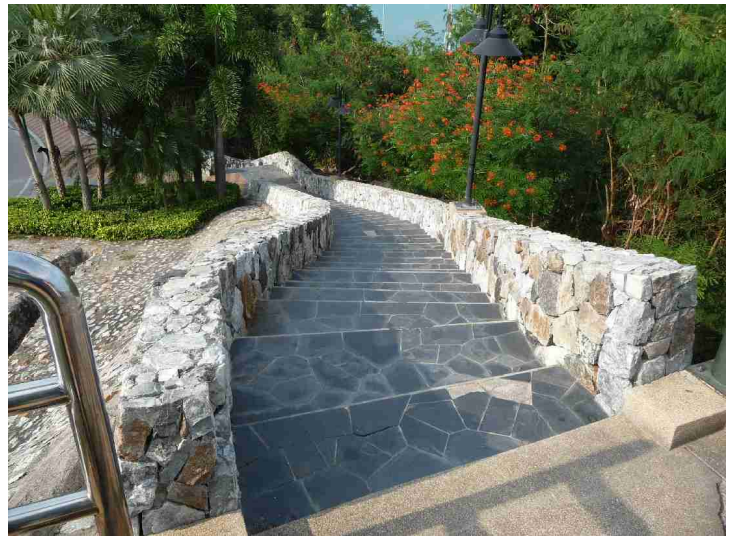


Anne Berit had to test sit one of them.





Here we are moving on.



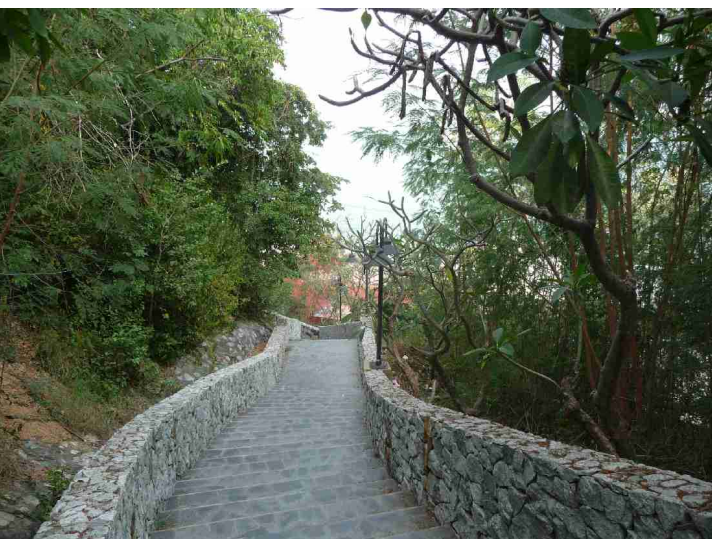
Now we have started the descent to the lighthouse.  
A lot of stairs.



Further down.



Here we are looking back.



Now we can see the see.



Almost down.





There is always boat traffic at the sea.



Here are small boats hauled onshore by old tractors. The boats have to help by giving full throttle.



This is a three-wheeled motorcycle taxi, a tuk-tuk.



Here are a lot of tuk-tuks waiting for customers. The tuk-tuk has been given its name after the sound it makes.