

FINNHOLT APRIL 26, 2026

We drove a round trip, on the south side of [Glomma](#) to start with and the E16 on the north side from Skarnes on the return.



Glomma at Kongsvinger. We see [Sentrum videregående skole](#) and [Høgskolesenteret](#) in the right of the picture.



This is at Hærnesmoen, just before we get to Sander.



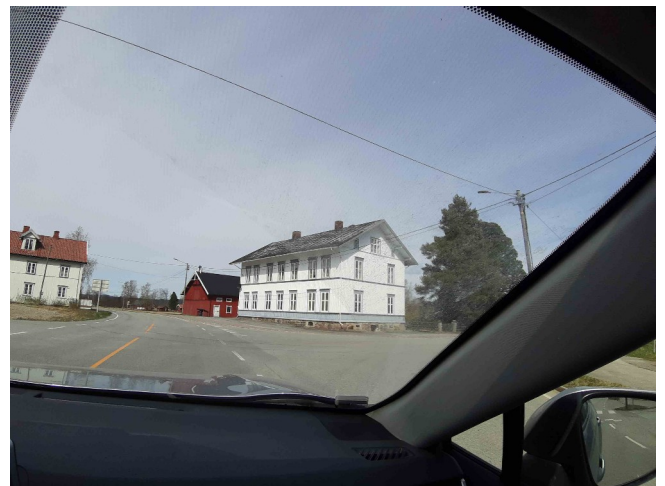
The sign says [Sander](#).



It is dry on the autumn-ploughed fields and the sand blows in the wind.



Houses in Sander.



This house is located in Sander at the junction where the road goes over the Sander bridge to the north side of Glomma.



A little after Sander, we had to stop at a red light due to roadworks.



The birches are starting to turn green.



Soon at [Skarnes](#), which is the administration center in [Sør-Odal](#) municipality.



Through Skarnes center.



[Skarnes mill](#) with grain silos.



Then followed some straight stretches of road.



Then we shall turn towards [Finnholt](#) by [Disenå](#). Finnholt is a hamlet with 5 small farms approximately 18 km south of Disenå. Disenå had 273 inhabitants as of 1 January 2025.



Then we arrive at Finnholt community center. This sign shows the way.



We also see signs for ICR Music, which is a small local music company. Then it fits with an accordion under the sign.



Here is the community center.



Just beyond is [Maarud Gjestegaard](#). It is a place that facilitates group gatherings.



This is where the paved road ends. There are several dirt roads further into the forest.



This is Østgarden The eastern farm) at Finnholt.



Still Østgarden.



This is Vestgarden (the western farm).



This tree stands on Bråten.



When we drove back we took a small detour here where the sign says [Rakeie](#) og Flaen. Rakeie is a listed burial ground that was used in the years from 1887 to 1927.

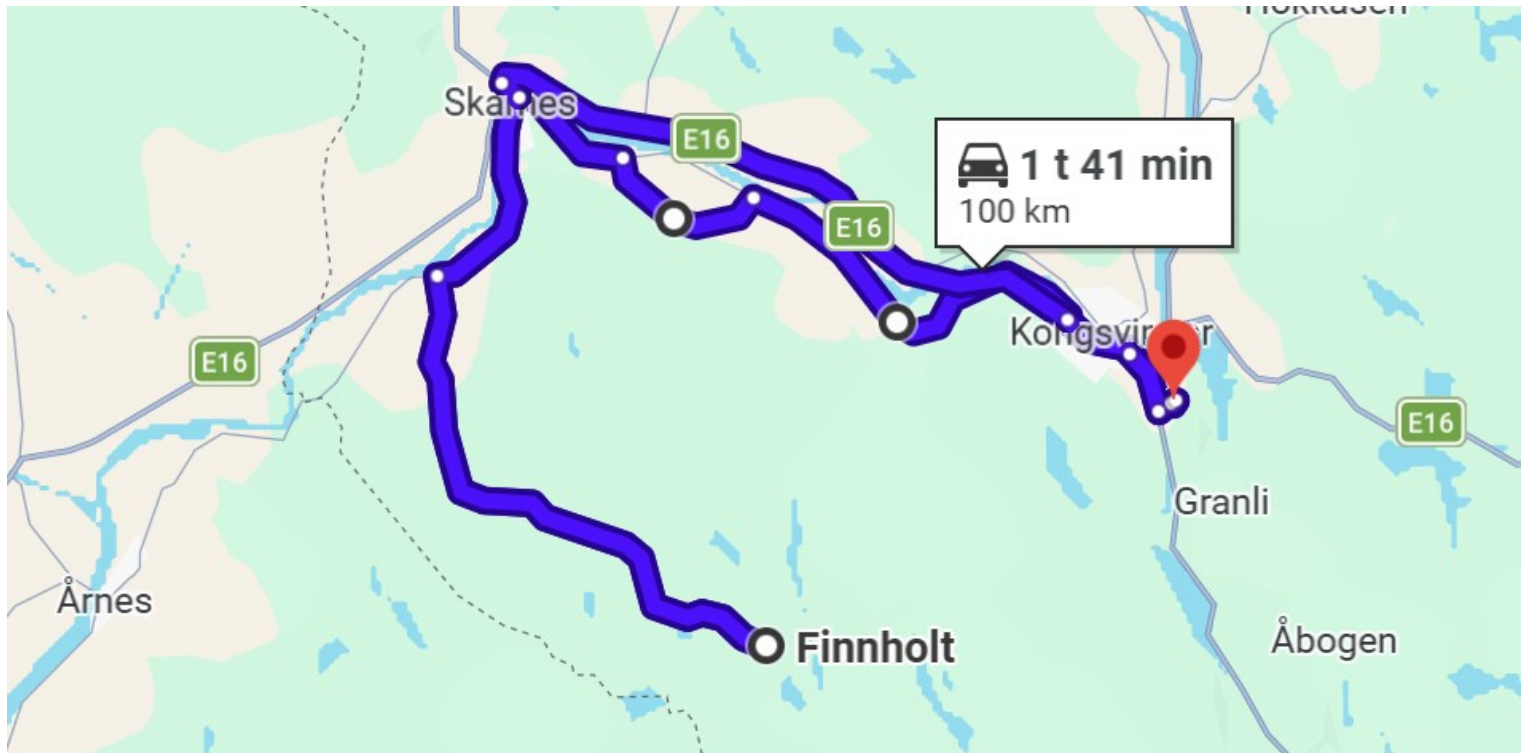


The lake is called Sæterlisjøen.



Here they have set up a platform for bird watching.

They have also a nice wooden fence.



This was the driving route.